



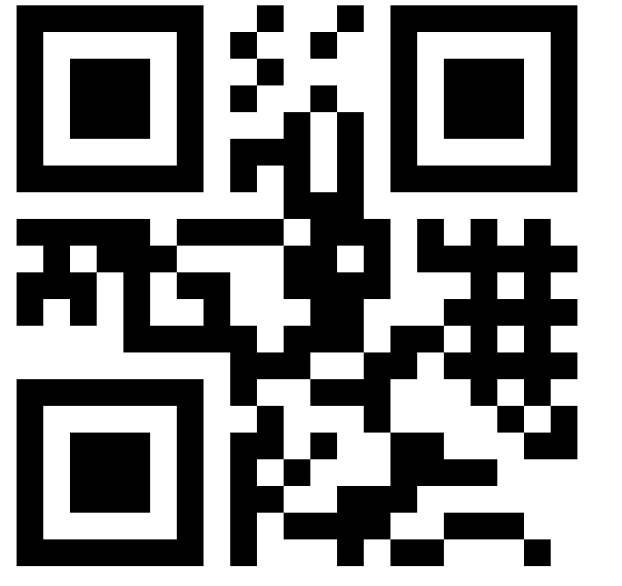
# CASE

Competencies for a sustainable socio-economic development

Terra Institute GmbH  
Säbenertorgasse 2/2  
I - 39042 Brixen  
www.terra-institute.eu

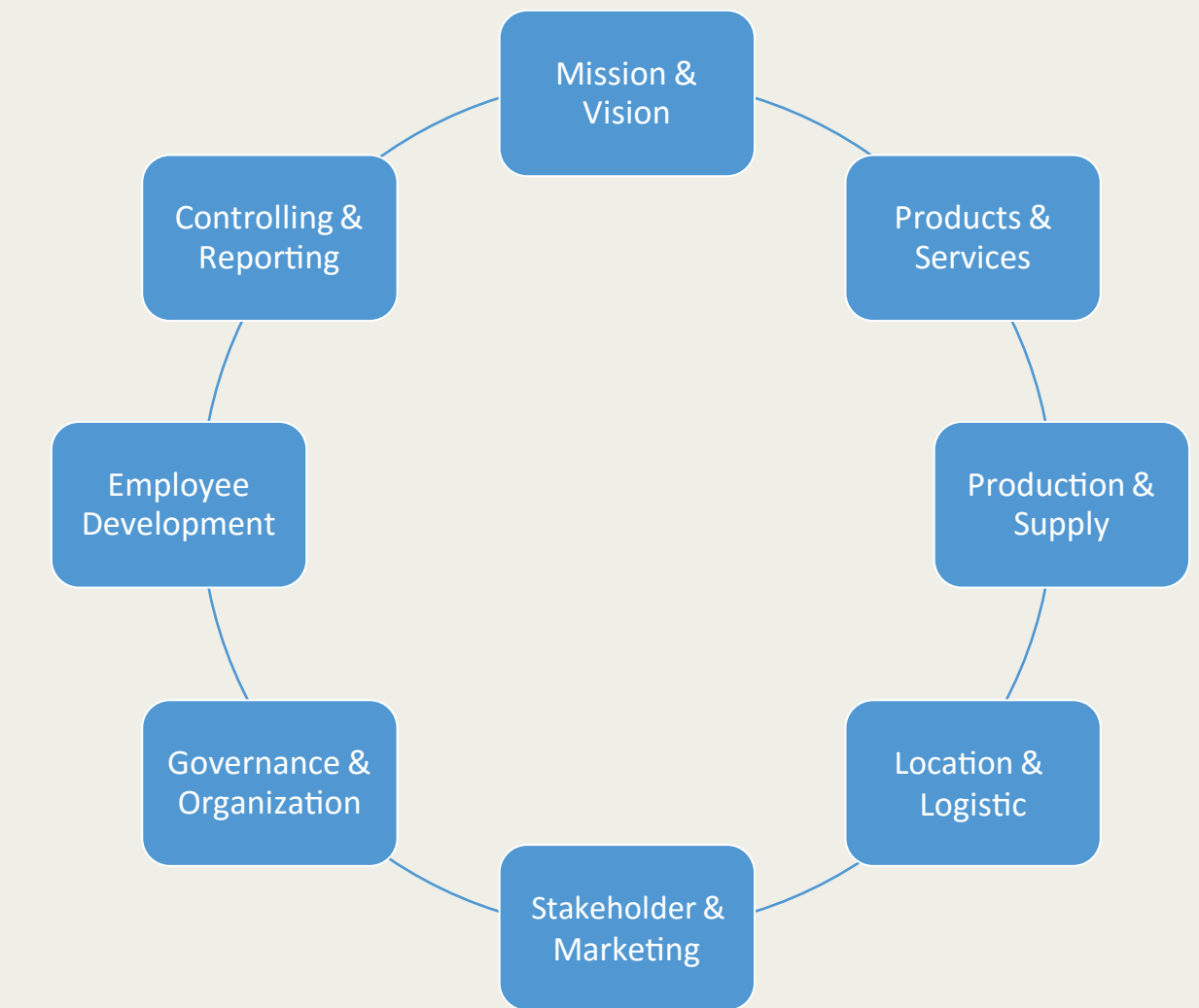
Johanna Bernhardt  
j.bernhardt@terra-institute.eu

[www.case-ka.eu](http://www.case-ka.eu)



We understand enterprises as integrated systems of various business areas, functions and actors.

Every department/business area faces specific opportunities and challenges for acting sustainably.



## Background

## Aim of the tool

- Understand enterprises and organizations as integrated systems
- Visualize the interplay between different business areas
- Identify opportunities and challenges of sustainable development
- Get a wider perspective of sustainable entrepreneurial acting



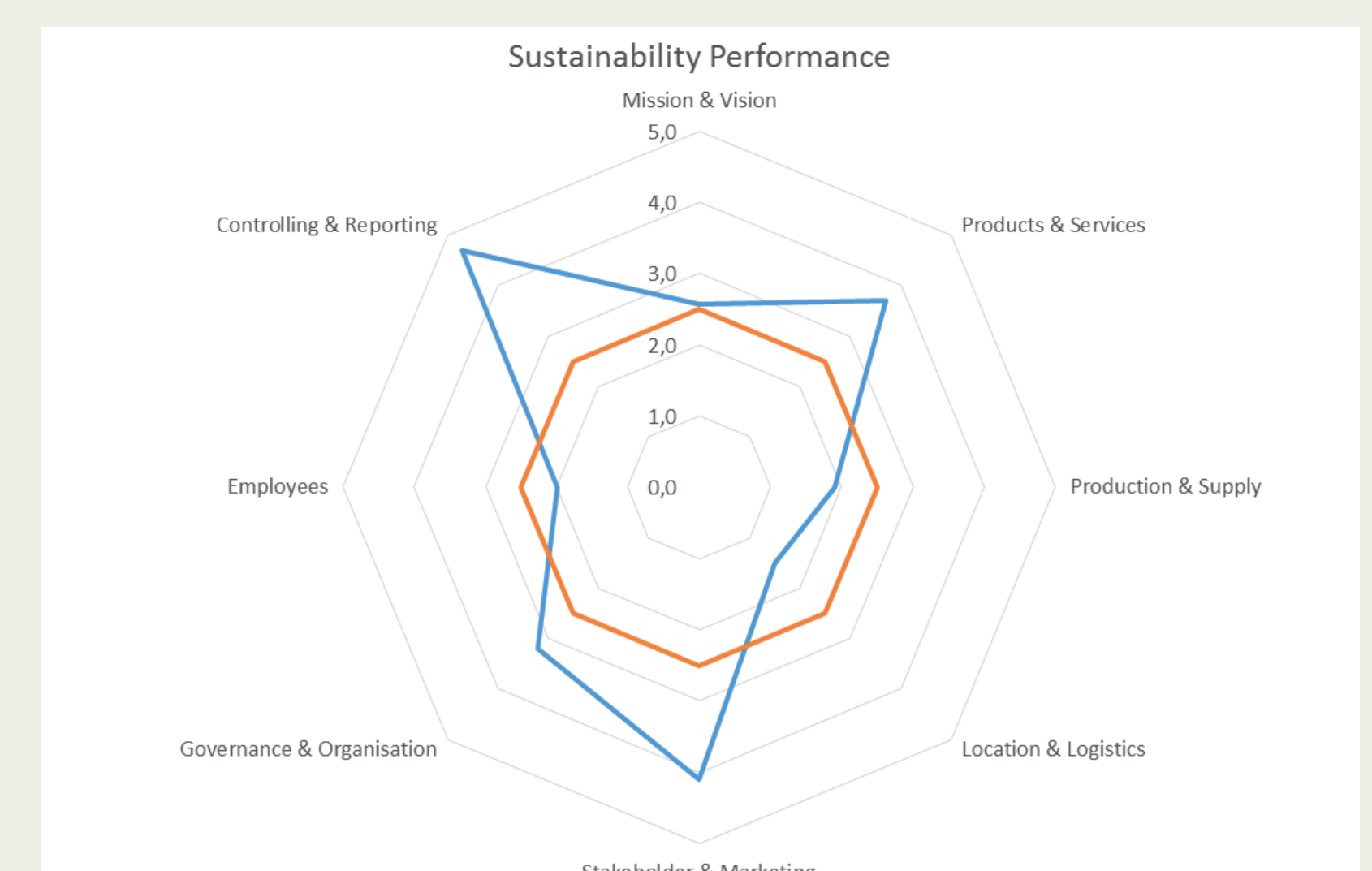
## CASE Sustainability Performance Tool

## Application Opportunities

- In teaching:
- integrated in transdisciplinary courses
  - cooperation projects with external partners
- In enterprises:
- as self-assessment tool to visualize the sustainability performance
  - as impuls to outline sustainable future developments

## Five Steps Towards the Sustainability Profile

- Step 1 - Data Collection: Get familiar with the business areas of the enterprise
- Step 2 - Sustainability Assessment: Assess the single business areas along key statements
- Step 3 - Qualitative Analysis: Ground your choice with qualitative justifications
- Step 4 - Sustainability Profile: Figure out the sustainability challenges and opportunities
- Step 5 - Reflection: Discuss the results with colleagues, teachers, external partners



This project is financed by the Erasmus+ Programme

